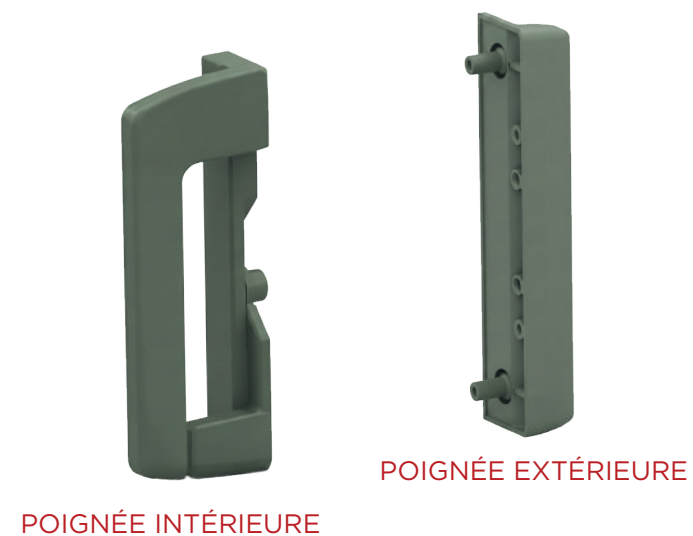


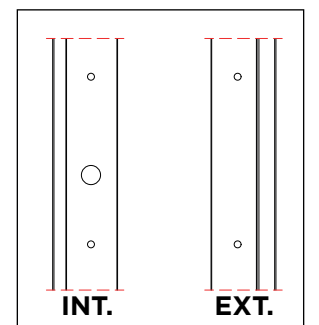
NOTICE MONTAGE POIGNEE

COULISSANT
ultim

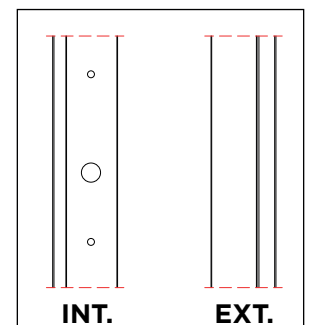
WWW.GROUPE-MILLET.COM



USINAGES MONTANT OUVRANT



• AVEC POIGNEE EXTERIEURE

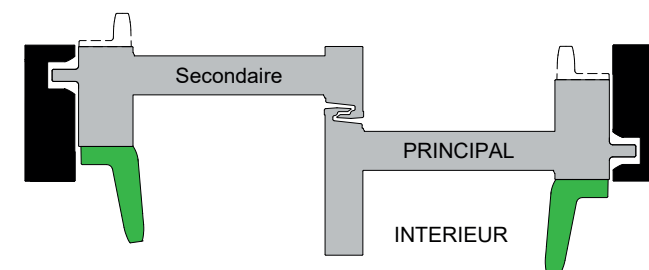


• SANS POIGNEE EXTERIEURE

VANTAIL PRINCIPAL À DROITE MONTAGE POIGNEE INTERIEURE

VANTAIL SECONDAIRE
AVEC POIGNEE EXTERIEURE
NOTICE C.....PAGE 3

SANS POIGNEE EXTERIEURE
NOTICE D.....PAGE 4



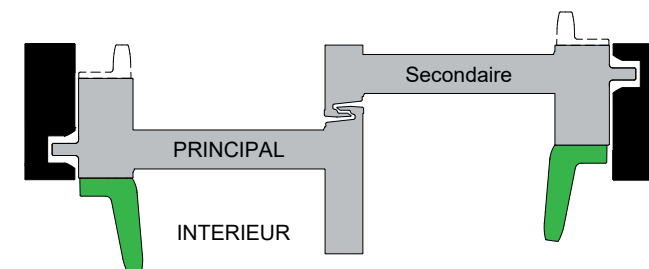
VANTAIL PRINCIPAL
AVEC POIGNEE EXTERIEURE
NOTICE A.....PAGE 1

SANS POIGNEE EXTERIEURE
NOTICE B.....PAGE 2

VANTAIL PRINCIPAL À GAUCHE MONTAGE POIGNEE INTERIEURE

VANTAIL PRINCIPAL
AVEC POIGNEE EXTERIEURE
NOTICE A.....PAGE 1

SANS POIGNEE EXTERIEURE
NOTICE B.....PAGE 2

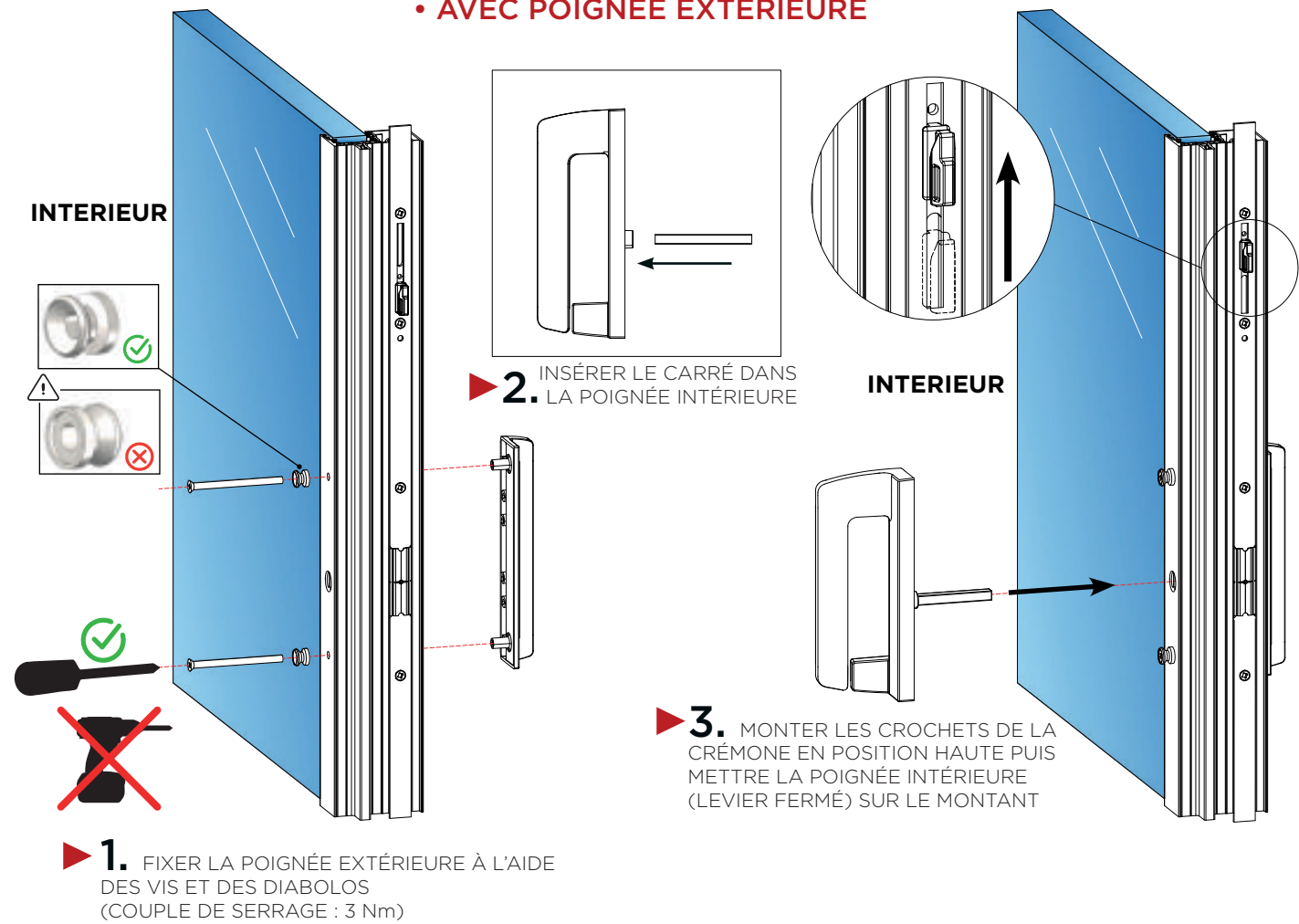


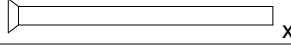

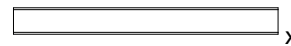
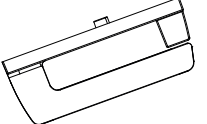

VANTAIL SECONDAIRE
AVEC POIGNEE EXTERIEURE
NOTICE C.....PAGE 3

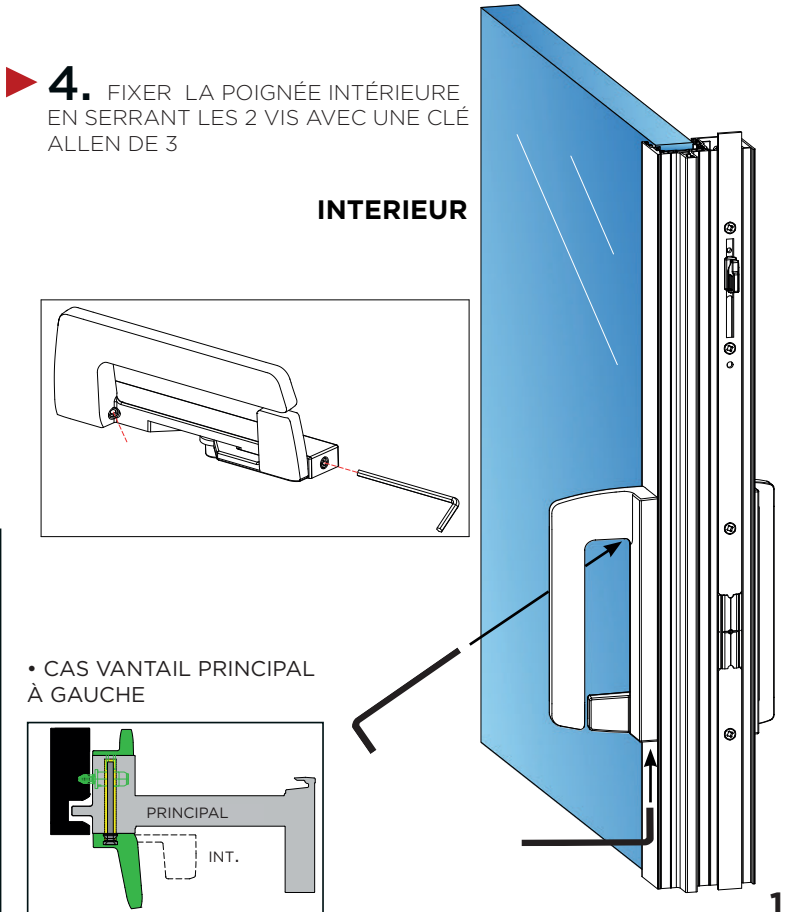
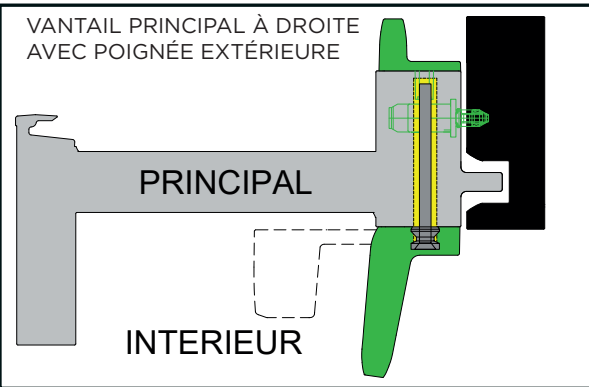
SANS POIGNEE EXTERIEURE
NOTICE D.....PAGE 4

ultim

MONTAGE DE LA POIGNÉE - NOTICE A
VANTAIL PRINCIPAL
• AVEC POIGNÉE EXTÉRIEURE

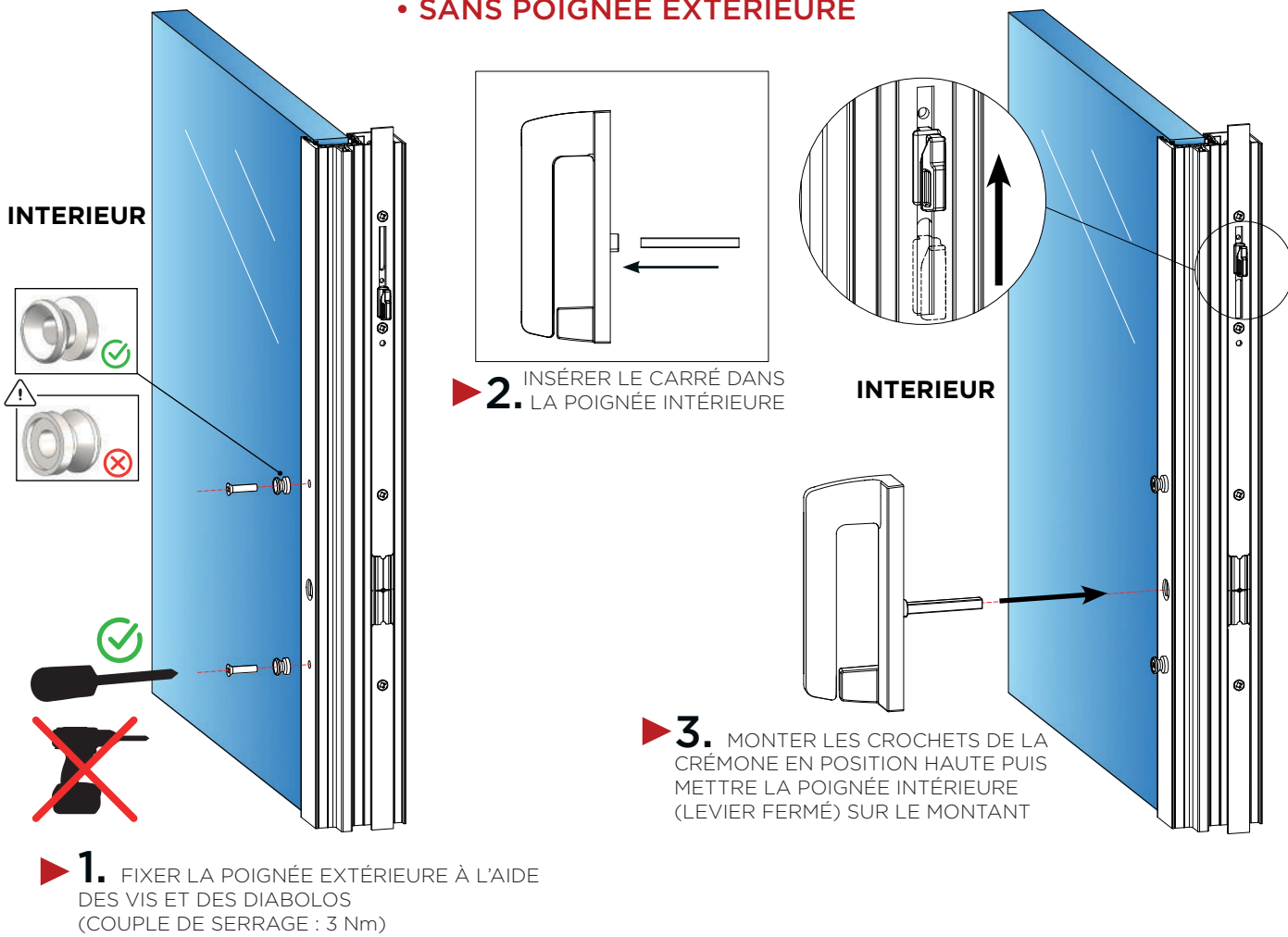





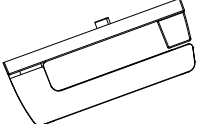
Pièces à monter	
 x2	Vis TF M5x70mm
 x2	Diabolo Ø 12mm
 x1	Carré long 70x7mm
 x1	Poignée intérieure vantail principal
 x1	Poignée extérieure vantail principal

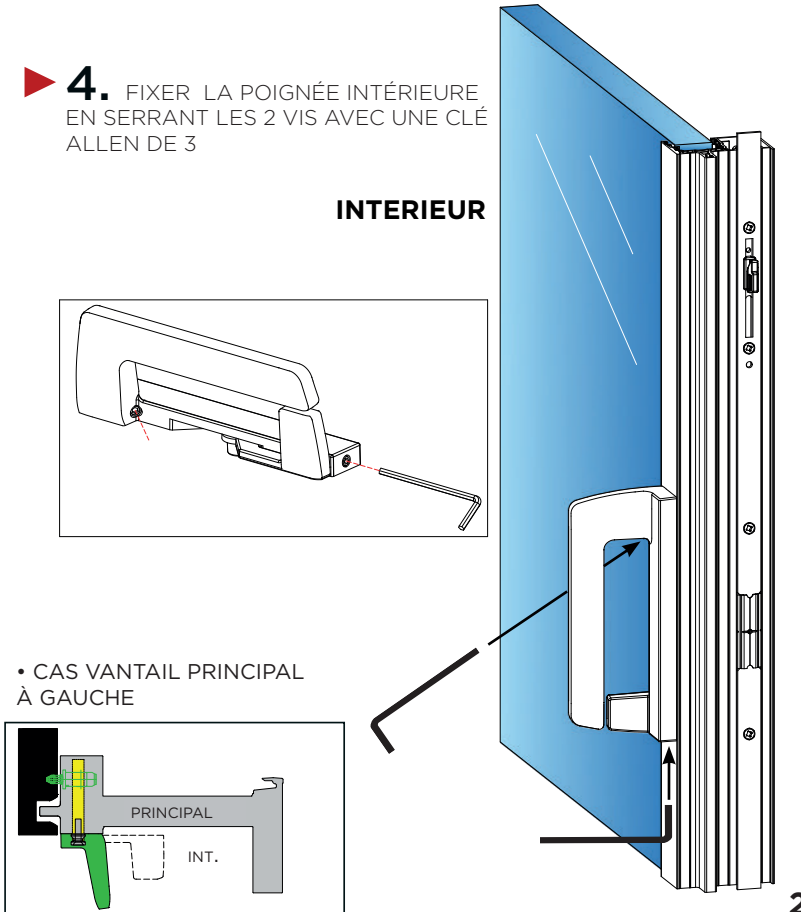
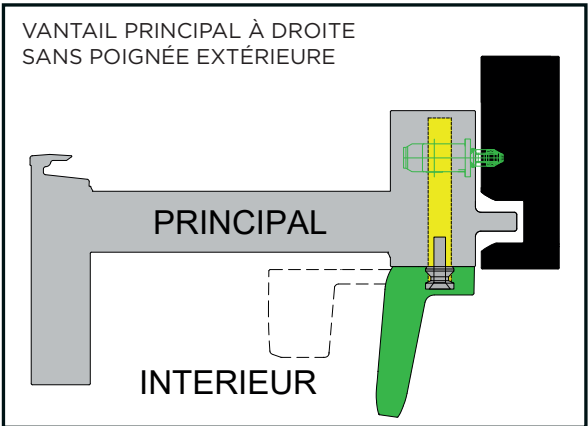


ultim

MONTAGE DE LA POIGNÉE - NOTICE B
VANTAIL PRINCIPAL
• SANS POIGNÉE EXTÉRIEURE

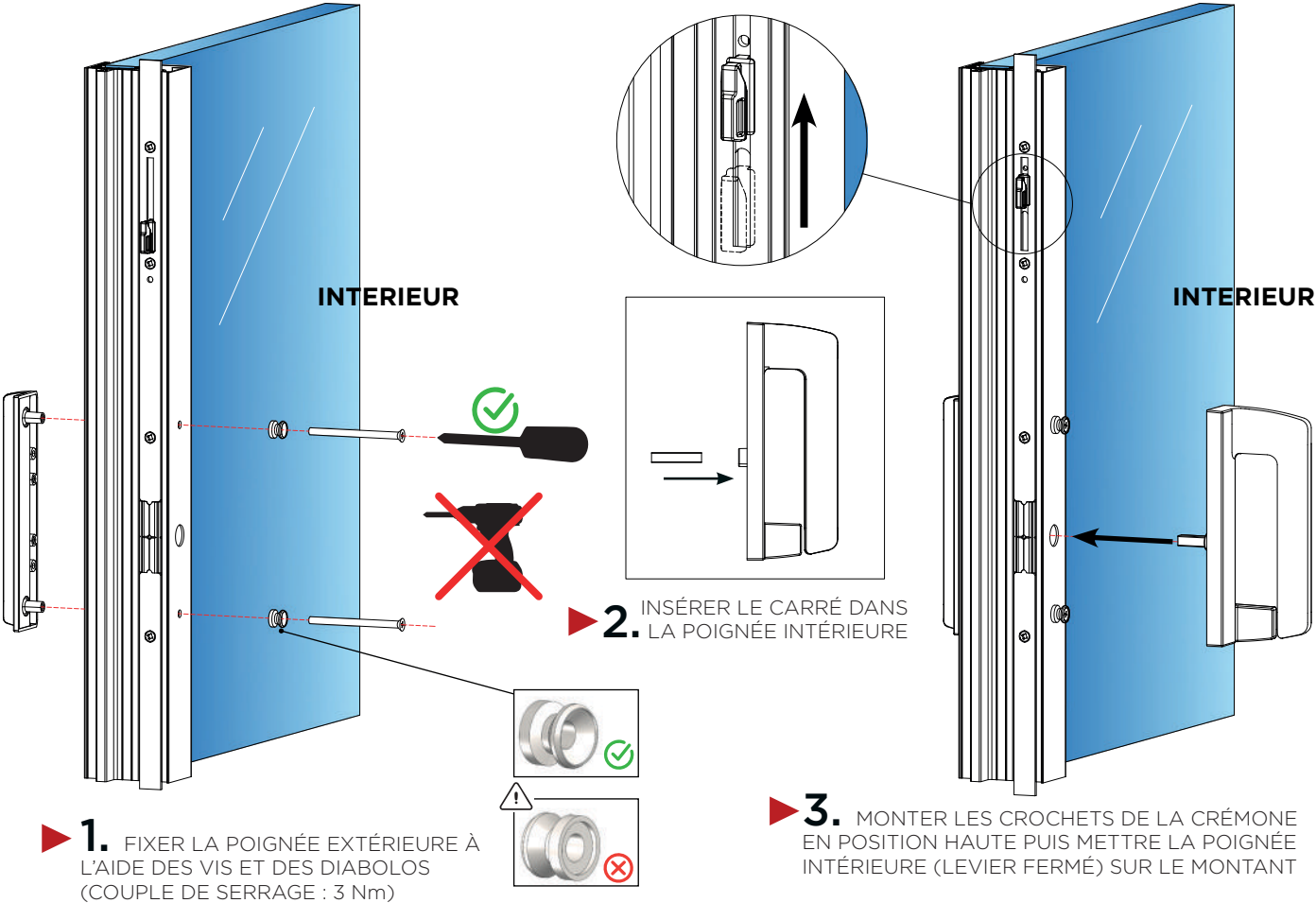


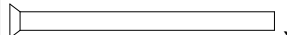


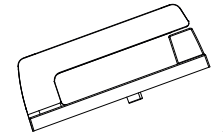

Pièces à monter	
 x2	Vis TF M5x22mm
 x2	Diabolo Ø 12mm
 x1	Carré long 70x7mm
 x1	Poignée intérieure vantail principal

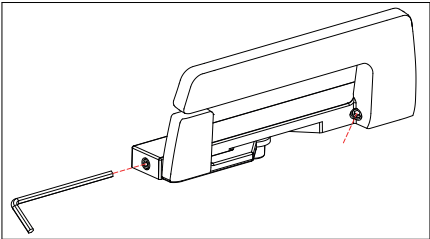


ultim

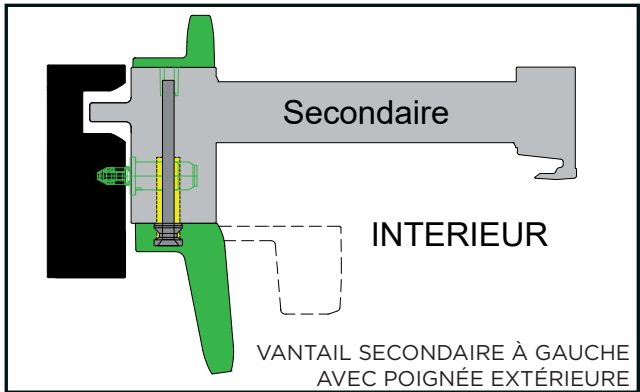
MONTAGE DE LA POIGNÉE - NOTICE C
VANTAIL SECONDAIRE
• AVEC POIGNÉE EXTÉRIEURE



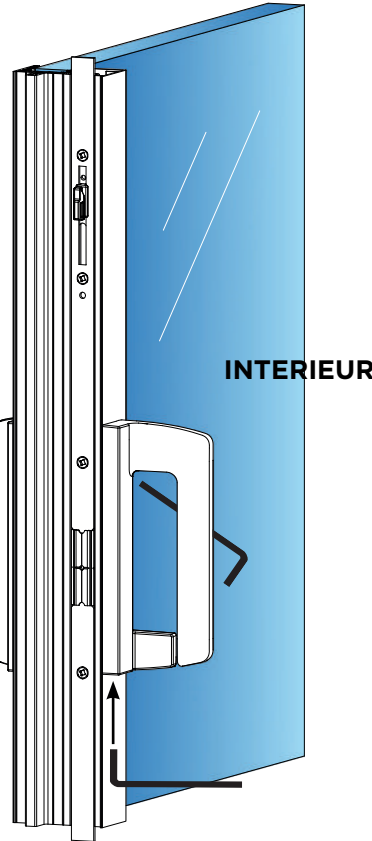
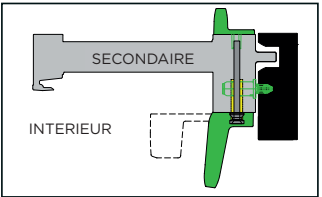
Pièces à monter	
 x2	Vis TF M5x70mm
 x2	Diabolo Ø 12mm
 x1	Carré court 35x7mm
 x1	Poignée intérieure vantail secondaire
 x1	Poignée extérieure vantail secondaire



4. FIXER LA POIGNÉE INTÉRIEURE EN SERRANT LES 2 VIS AVEC UNE CLÉ ALLEN DE 3



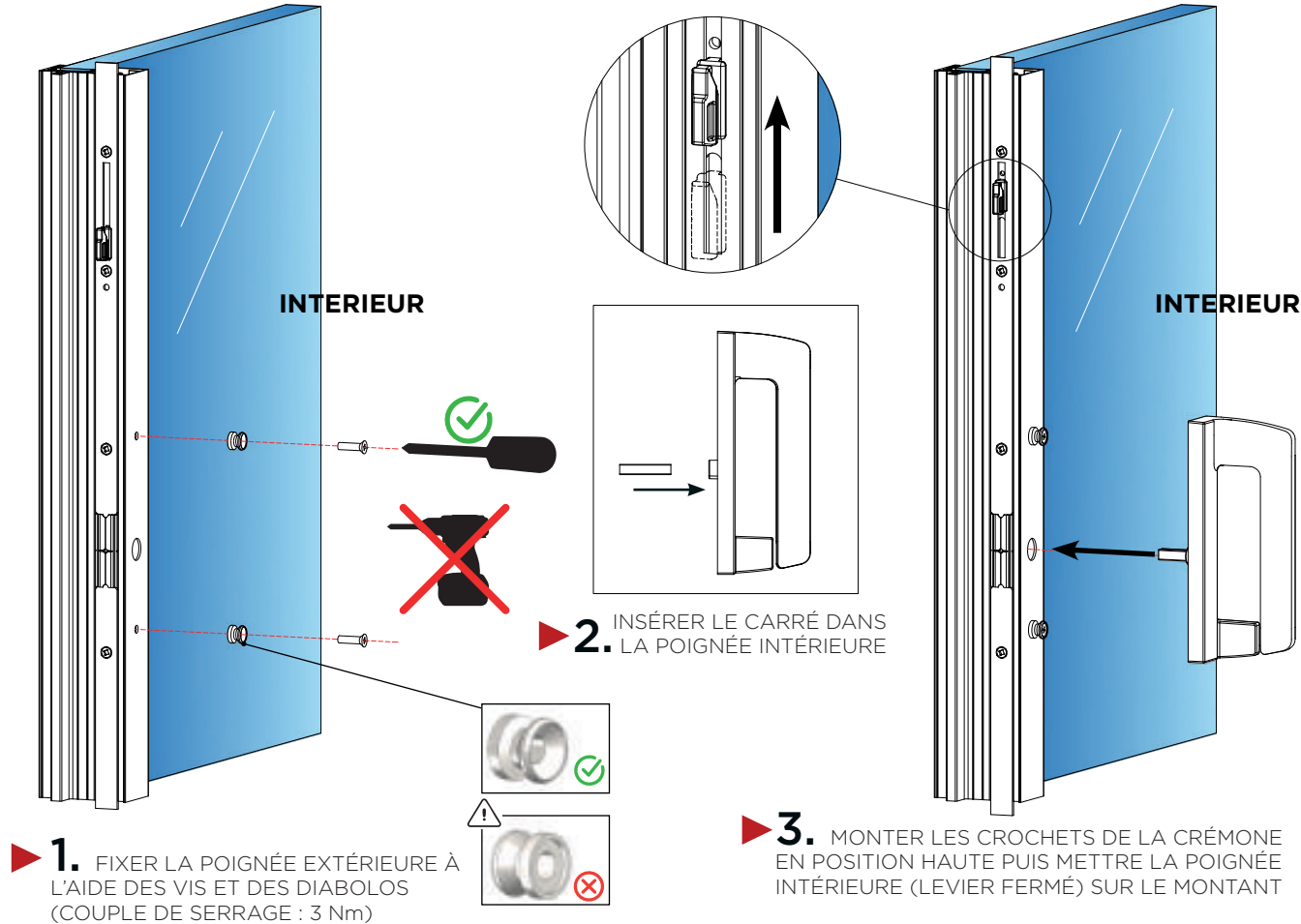
• CAS VANTAIL SECONDAIRE À DROITE

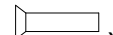


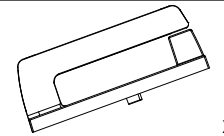


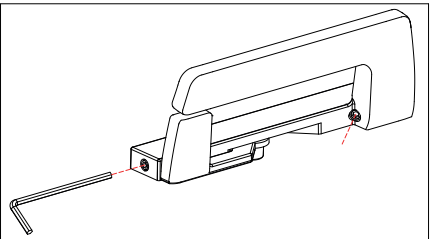
3

ultim

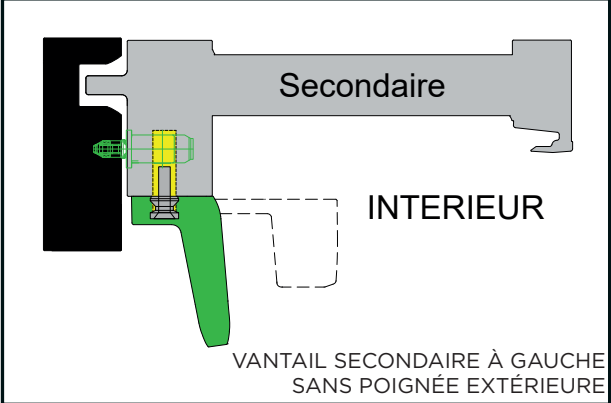
MONTAGE DE LA POIGNÉE - NOTICE D
VANTAIL SECONDAIRE
• SANS POIGNÉE EXTÉRIEURE



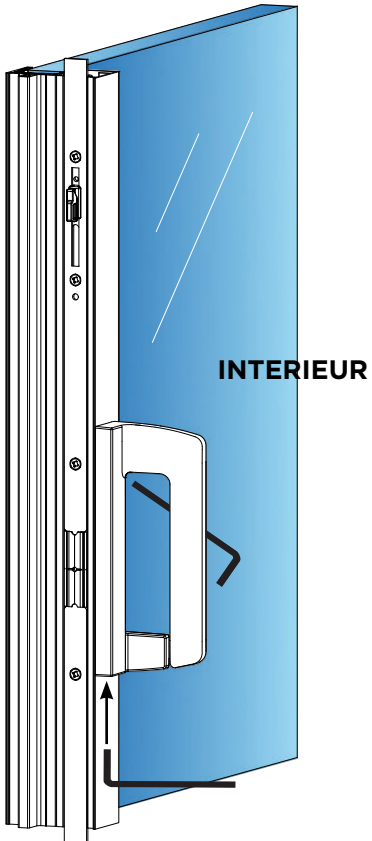
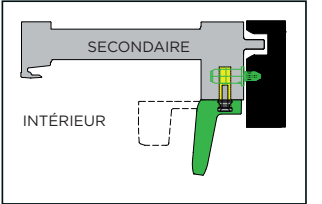
Pièces à monter	
 x2	Vis TF M5x22mm
 x2	Diabolo Ø 12mm
 x1	Carré court 35x7mm
 x1	Poignée intérieure vantail secondaire



4. FIXER LA POIGNÉE INTÉRIEURE EN SERRANT LES 2 VIS AVEC UNE CLÉ ALLEN DE 3



• CAS VANTAIL SECONDAIRE À DROITE



4